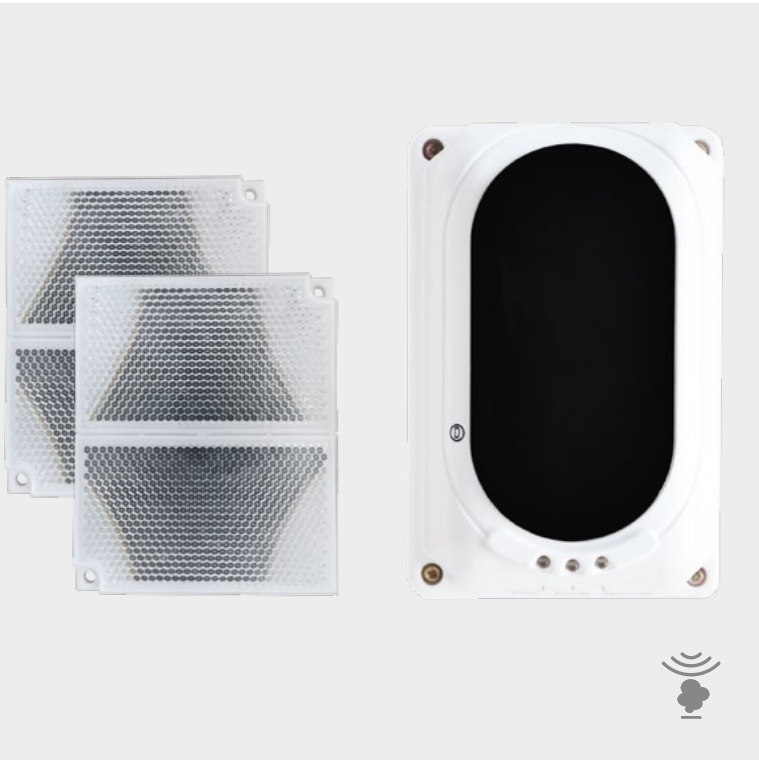


TX 7130

Beam smoke detector

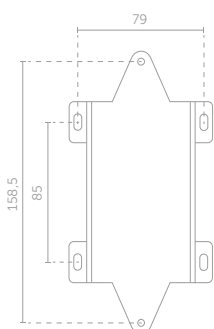
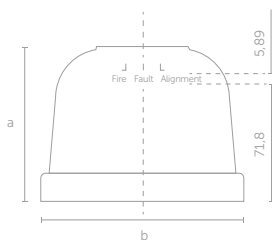


This type of device is designed to secure large-scale premises such as production halls, warehouses, museums, churches, shopping malls, etc. The detector provides a wide variety of monitored space ranging from 8 - 100 metres. The beam detector comprises a transmitter and a receiver (in a single housing) as well as a prism reflector. The transmitter sends out an infrared beam which, after being reflected by the prism reflector at an angle of 180°, returns to the receiver. If the beam is obscured by smoke, the unit activates an alarm condition.

FEATURES OF THE TX 7130 BEAM SMOKE DETECTOR

- > transmitter and receiver in a single housing
- > built-in laser and display for easy calibration
- > 4 monitoring ranges (configurable)
- > 3 sensitivity levels
- > connection to MIO module

DIMENSIONS [mm]



TECHNICAL DATA

FEATURE	BEAM SMOKE DETECTOR TX7130			
SMOKE DETECTION	OPTICAL			
SUITABILITY FOR THE DETECTION OF TEST FIRES	ACCORDANCE WITH EN54-12:2002 BS 5839 PART 1:2002			
SUPPLY VOLTAGE	20 UP TO 28 [VDC]			
POWER CONSUMPTION MONITORING / ALARM / CALIBRATION	23 / 33 / 56 [mA]			
MONITORING RANGES [M]	8-20	20 - 40	40 - 70	70 - 100
NUMBER OF REQUIRED REFLECTORS	1	1	4	4
LOAD CAPACITY OF RELAYS (ALARM, FAULT)	NO; 2 [A], 30 [VDC]			
CASING TIGHTNESS	IP30			
OPERATING TEMPERATURE	-10 UP TO 55 [°C]			
ADMISSIBLE RELATIVE HUMIDITY	UP TO 95%, WITHOUT CONDENSATION			
OPTICAL SIGNALLING	LEDS: RED, GREEN, YELLOW			
DIMENSIONS	190.87x126.87x91.96 [mm]			
WEIGHT	440 [g]			
ACCESSORIES IN SET	MOUNTING BRACKET, 4 REFLECTORS			
MATERIAL / COLOUR OF CASING	ABS / WHITE			
PRODUCT CODE	FSD037			